



GPS FLOORS

[SMART × LUXURY]

GPS Floors has for more than a decade has been rigorously moving forward to provide an amalgamation of smart and luxury spaces. Every inch of our floor is smartly utilised for your comfort and indulgence.

PREVIOUS PROJECTS



F 36 VIPUL WORLD
Project Value : 5.2 Cr



F 48 VIPUL WORLD
Project Value : 2.7 Cr



E 2135 ANSAL ESECIA
Project Value : 6.0 Cr



F 57 VIPUL WORLD
Project Value : 6.4 Cr



C12A VIPUL WORLD
Project Value : 10.0 Cr



F 11-12 VIPUL WORLD
Project Value : 7.2 Cr

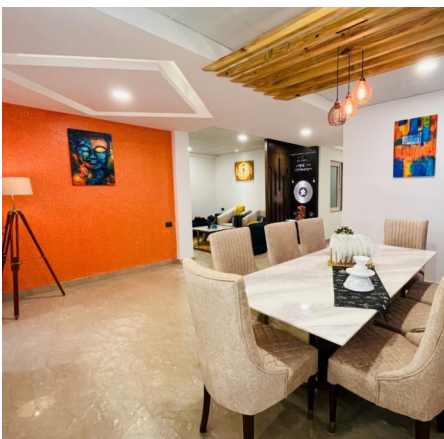
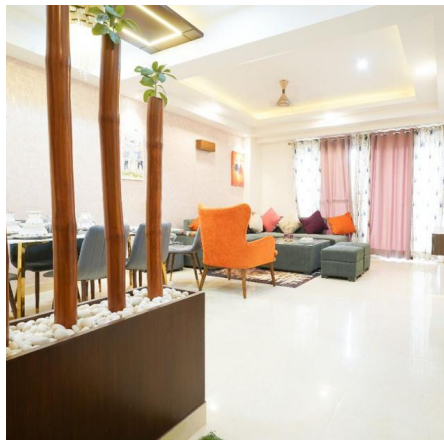
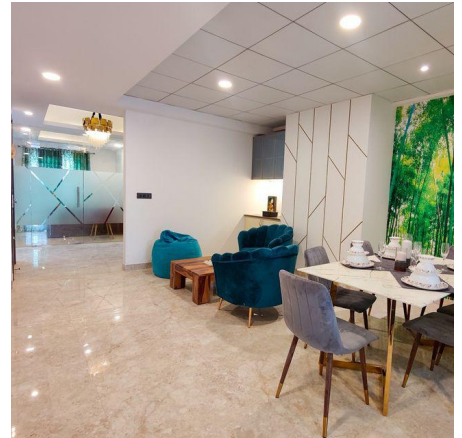


F 46-47 VIPUL WORLD
Project Value : 8.8 Cr



B2 07-08 BPTP ASTAIRE GARDEN
Project Value : 8.0 Cr

INTERIOR VIEW



CURRENT PROJECTS



A 215A VIPUL WORLD

Project Value : 5.80 Cr
Area : 192 Sqyd
Type : 3BHK



C 86 BPTP ASTAIRE GARDEN

Project Value : 14.40 Cr
Area : 560 Sqyd
Type : 4BHK+Home Office



E 2207 ANSAL ESENCIA

Project Value : 6.40 Cr
Area : 251 Sqyd
Type : 3BHK+ Study Room



D 1591 ANSAL ESENCIA

Project Value : 13.20 Cr
Area : 580 Sqyd
Type : 4BHK+Home Office



D 1581 ANSAL ESENCIA

Project Value : 6.00 Cr
Area : 232 Sqyd
Type : 3BHK



C 205 BPTP ASTAIRE GARDEN

Project Value : 9.60 Cr
Area : 333 Sqyd
Type : 4BHK